



Crystic fibreglass flat roof membrane to roof

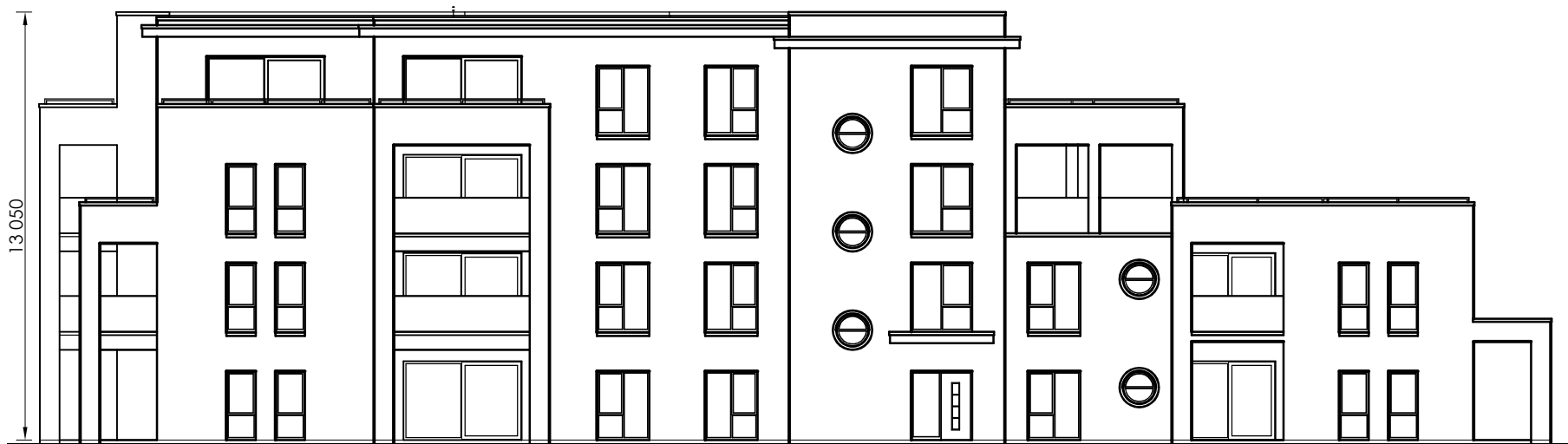
Selected plaster finish

Selected double/triple glazed windows & doors

Smooth plaster plinth

West Elevation

Scale 1:200



Crystic fibreglass flat roof membrane to roof

Selected plaster finish

Selected double/triple glazed windows & doors

Smooth plaster plinth

South Elevation

Scale 1:200



Crystic fibreglass flat roof membrane to roof

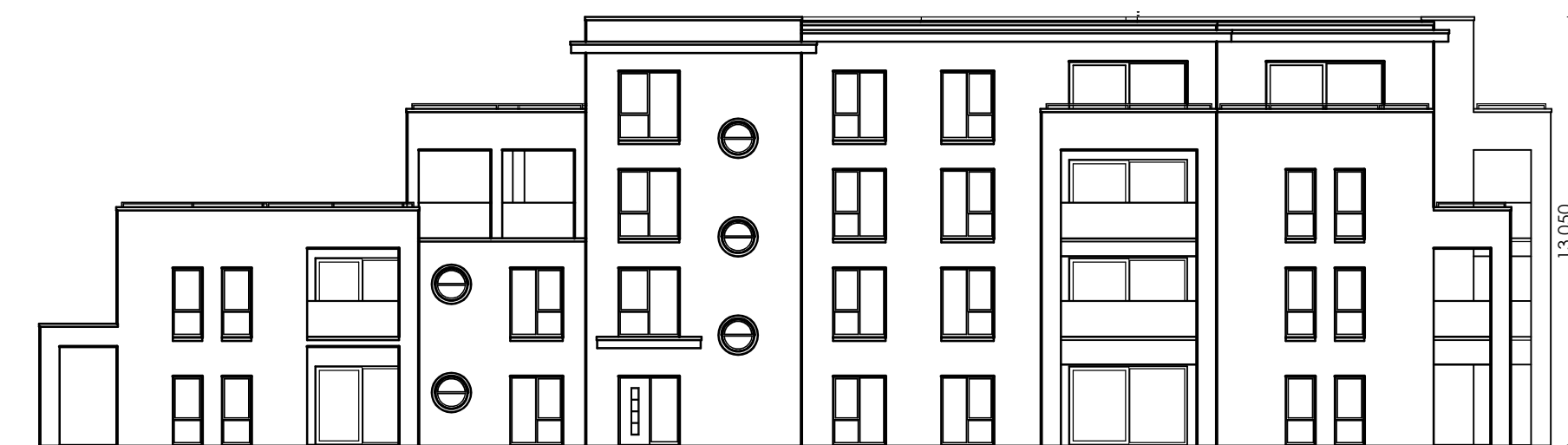
Selected plaster finish

Selected double/triple glazed windows & doors

Smooth plaster plinth

East Elevation

Scale 1:200



Crystic fibreglass flat roof membrane to roof

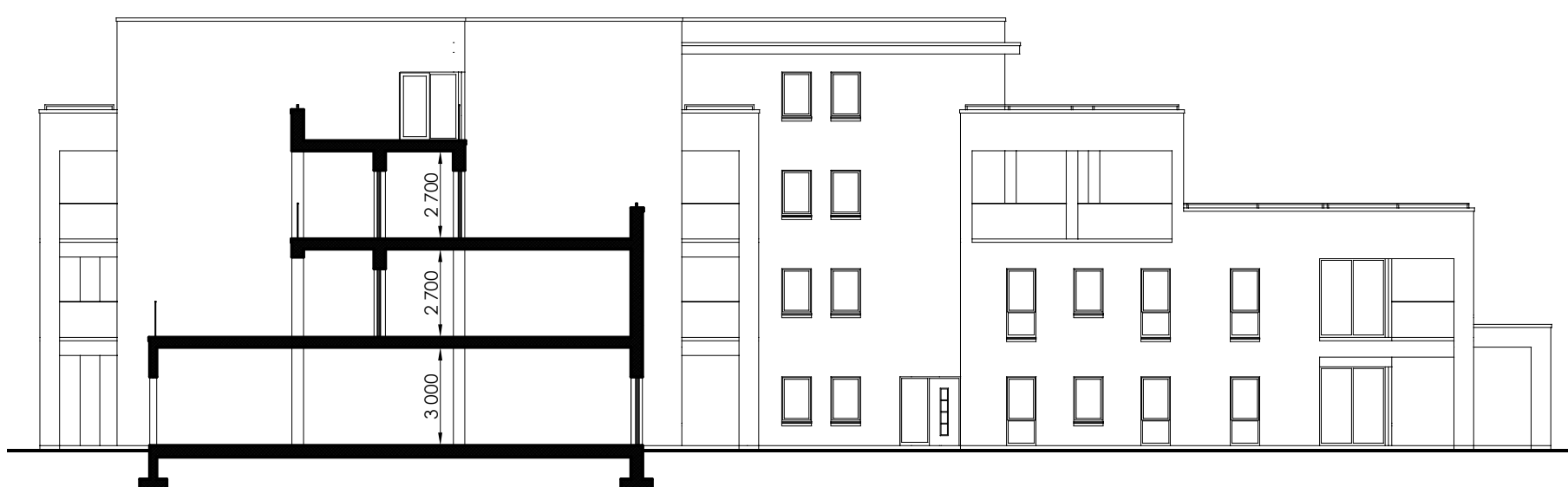
Selected plaster finish

Selected double/triple glazed windows & doors

Smooth plaster plinth

North Elevation

Scale 1:200



Crystic fibreglass flat roof membrane to roof

External wall to be Insulated cavity construction, insulation in accordance with Part L specification

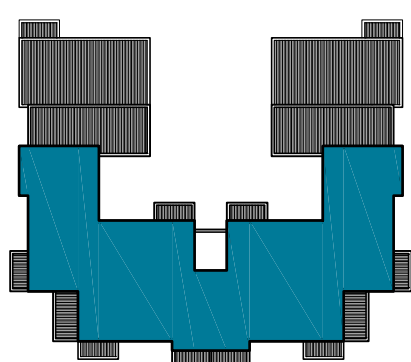
Precast concrete suspended floors to Engineers detail

In-situ concrete floor, insulation in accordance with Part L specification

Concrete foundations in accordance with engineers specification


Cross Section

Scale 1:200



Type 'D' [Total Area = 4,377.1 m²]

- 8 no. 1-bed [55.3 m²]
- 4 no. 1-bed [56.8 m²]
- 2 no. 1-bed [58.6 m²]
- 26 no. 2-bed [79.7 m²]
- 2 no. 2-bed [100.5 m²]

Revision	Description	Date
		GLEESON MCSWEENEY ARCHITECTS
Project	Proposed residential development at Ballykeeffe, Raheen, Limerick. For: DW Raheen Developments Ltd.	
Title	Apartment Building Type D - Elevations	Sheet 3 of 3
Scale	1:200 @ A2	Date December 2021
Drawn	M.M.	Rev 1704-10-128
99 O'Connell St., Limerick T 061 412277 E info@gleesonmcsweeney.ie		